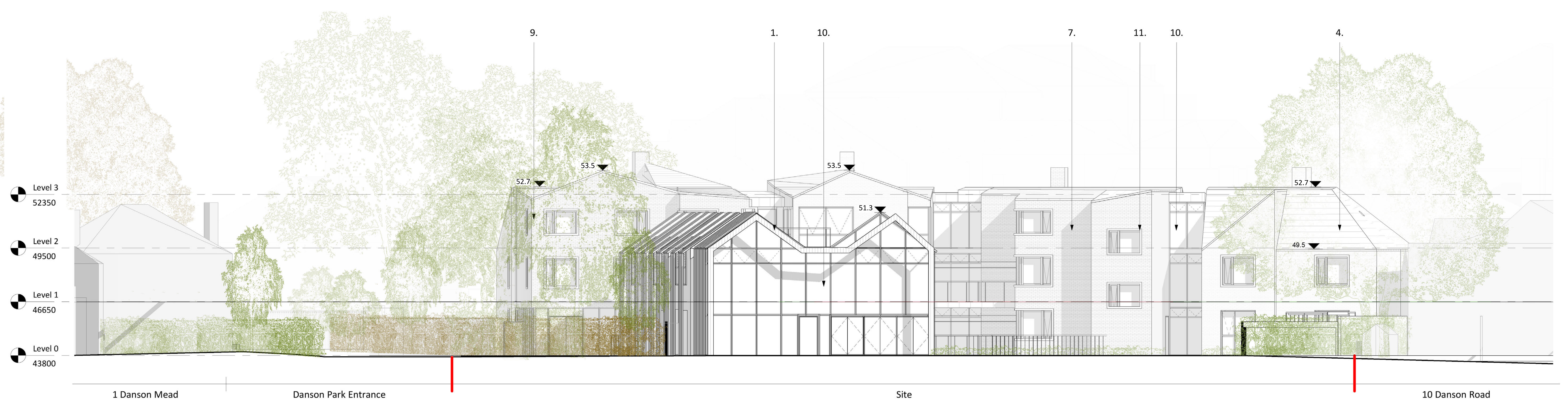


A - South Elevation

1 : 100



B - West Elevation

1 : 100



C - North Elevation

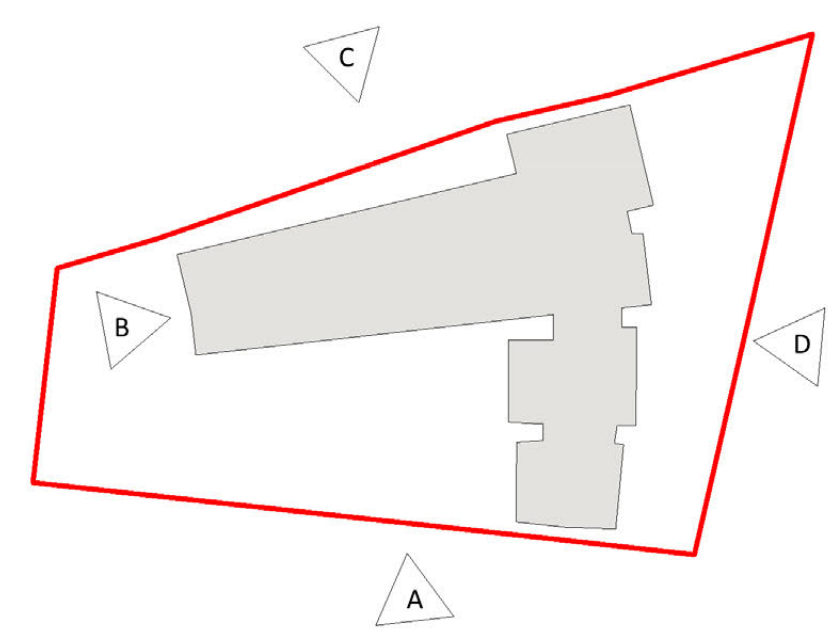
1 : 100



D - East Elevation

1 : 100

1. Metal Frame for planted climbers
2. Vertical standing seam red/brown VMZinc fascia system
3. Vertical standing seam dark red/brown VMZinc fascia system
4. Vertical standing seam grey VMZinc fascia system
5. Sun tunnel
6. Red brick with light mortar
7. Red/Brown brick with dark mortar
8. Red brick with dark mortar
9. Red/Brown brick with light mortar
10. Fixed glazing
11. Masonry window surround
12. Masonry mullions
13. Fixed window with integral inward opening section. Aluminium external facing in selected RAL colour tbc
14. Full height glazing forming a winter garden



| Rev. | Description | Drawn | Checked | Date |
|------|--|-------|---------|------------|
| PS | Additional updates following consultation | HEB | HEB | 13/10/2020 |
| PS | Refuse store adjusted | HEB | HEB | 17/09/2019 |
| PS | Internal space adjusted in line with meeting comments 15/08/2019 | HEB | HEB | 27/09/2019 |
| PS | Internal space adjusted in line with meeting comments 15/08/2019 | HEB | HEB | 16/09/2019 |
| PS | Revision 1 | HEB | HEB | 05/05/2019 |

| Assessment | | | | |
|------------------------|------------|-------|--------|----------|
| Suitability | | | | |
| Issued for information | | | | |
| Project | | | | |
| Danson Road | | | | |
| Carriageway | | | | |
| Drawing | | | | |
| GA Elevations | | | | |
| Drawing No. | Originator | Zone | Level | Type |
| 10020-00 | RVD | 00 | 00 | DR |
| Project No. | Scale | at A0 | Status | Revision |
| 10020-00 | 1 : 100 | SO | PS | PS |

info@ryderarchitecture.com
 www.ryderarchitecture.com