

The use of this data by the recipient acts as an agreement of the following statements. Do not use this data if you do not agree with any of the following statements:-

All drawings are based upon site information supplied by third parties and as such their accuracy cannot be guaranteed. All features are approximate and subject to clarification by a detailed topographical survey, statutory service enquiries and confirmation of the legal boundaries.

The controlled version of this drawing should be viewed in DWF or PDF format not DWG or other formats. All prints of this drawing must be made in full colour.

Where this drawing has been based upon Ordnance Survey data, it has been reproduced under the terms of Ryder Licence No. 100000144. Reproduction of this drawing in whole or in part is prohibited without the prior permission of Ordnance Survey.

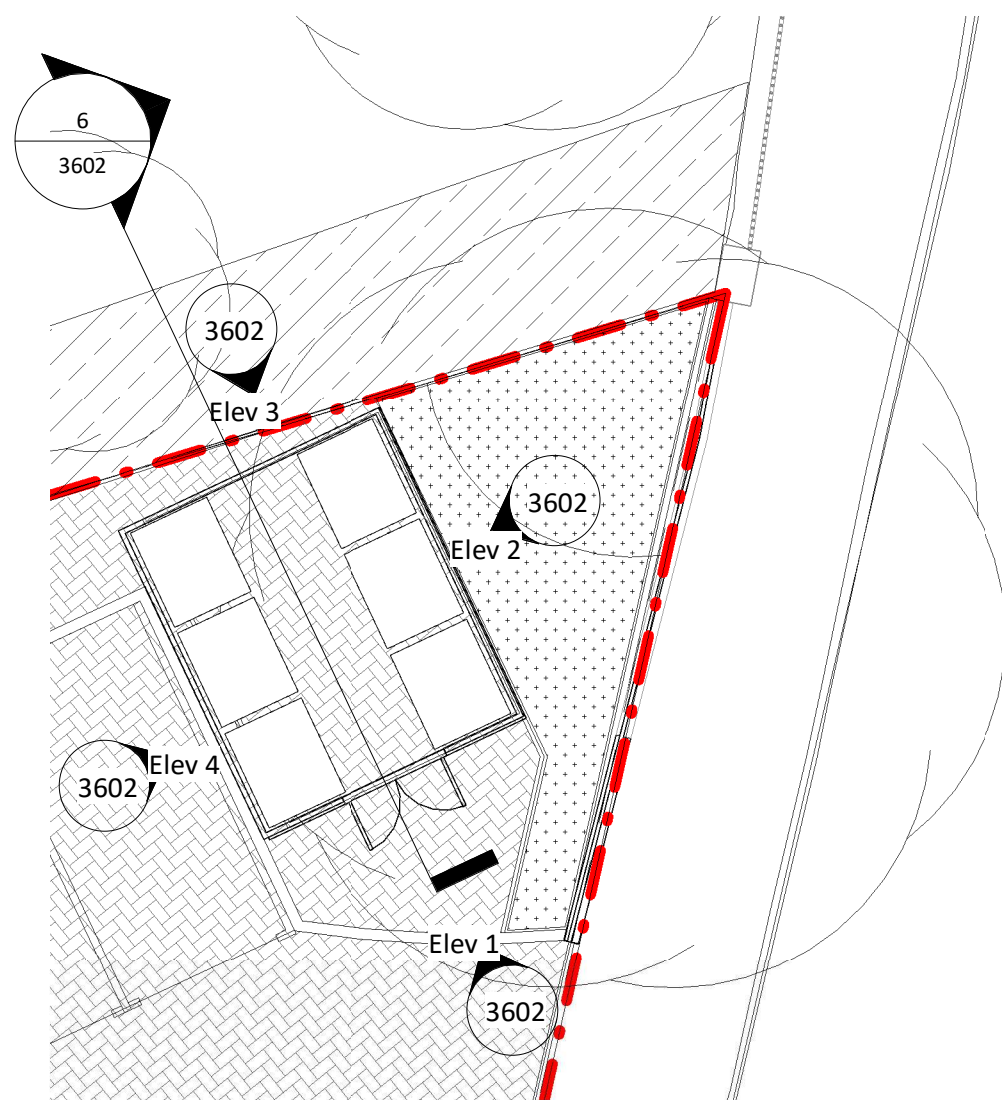
Do not scale the drawing. Use figured dimensions in all cases. Check all dimensions on site. Report any discrepancies in writing to Ryder before proceeding.

Scale Bar (m)



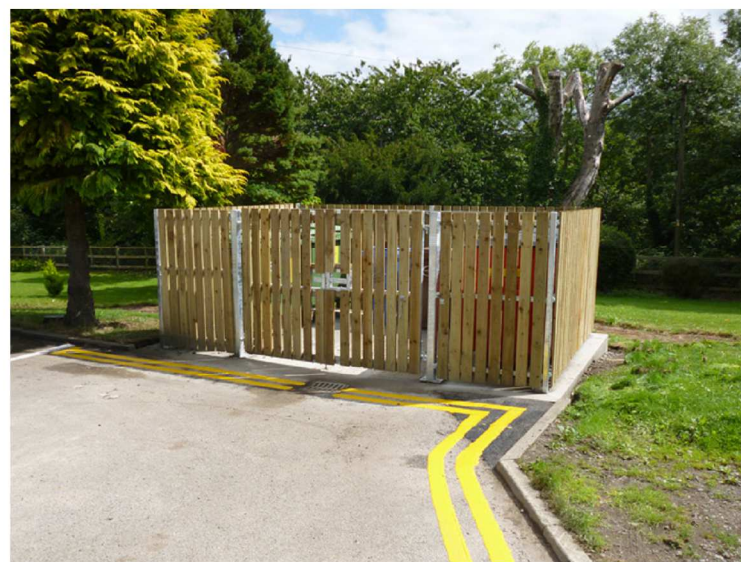
Note:

An lightweight secure timber enclosure with an open top and a post structure to work with the root protection zone.

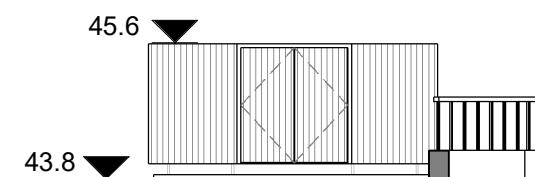


### Refuse Store Plan

1 : 100

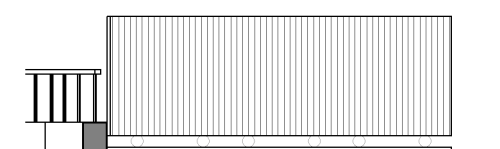


### Precedent for refuse store



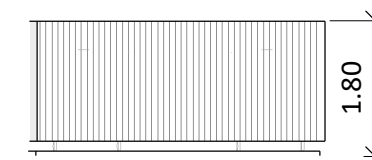
### Elevation 1

1 : 100



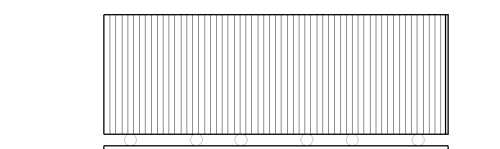
### Elevation 2

1 : 100



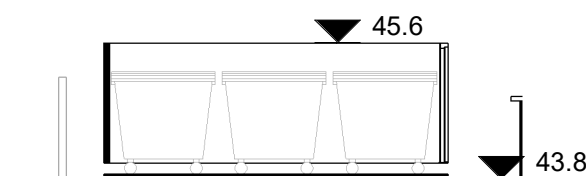
### Elevation 3

1 : 100



### Elevation 4

1 : 100



### Refuse Store - Section

1 : 100

Rev.	Description	Drawn	Checked	Date
P1	Additional updates following consultation	HBR	RFR	13/10/2020

#### Amendment

#### Suitability

Issued for information

#### Project

Danson Road  
Carebase

#### Drawing

Refuse Store Plan and Elevation

Drawing No.	Project ID	Originator	Zone	Level	Type	Role	Number
	DAN	- RYD	- 00	- XX	- DR	- A-	3602
Ryder Project No.	Scale at A3	Status	Revision				
10020:00	1 : 100	S2	P1				

info@ryderarchitecture.com  
www.ryderarchitecture.com

Ryder