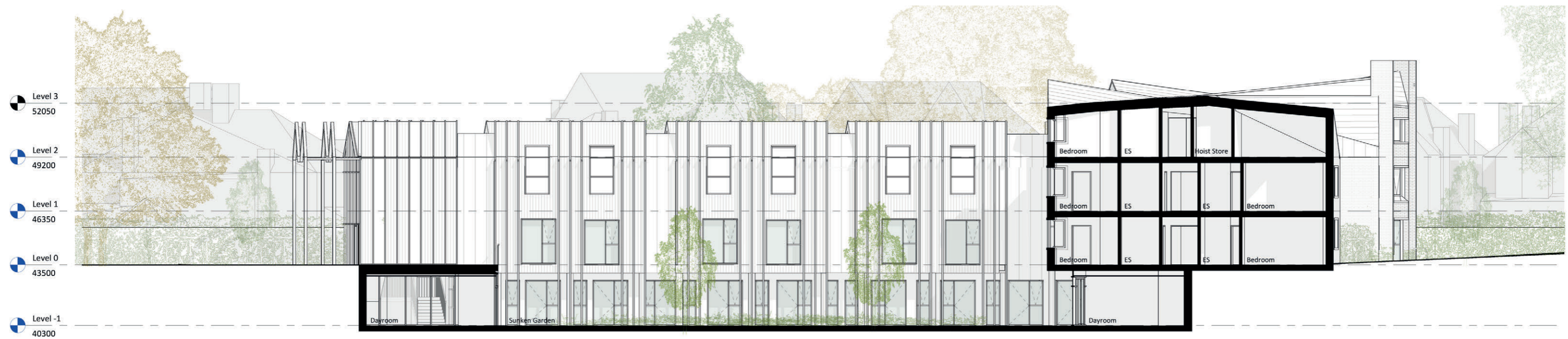


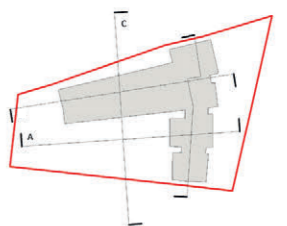
# Design Approach Sections



Section A  
1:200



Section C  
1:200





# Design Approach

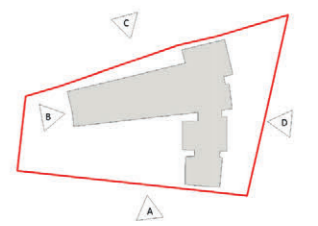
## Existing Elevations



Existing north elevation  
1:200

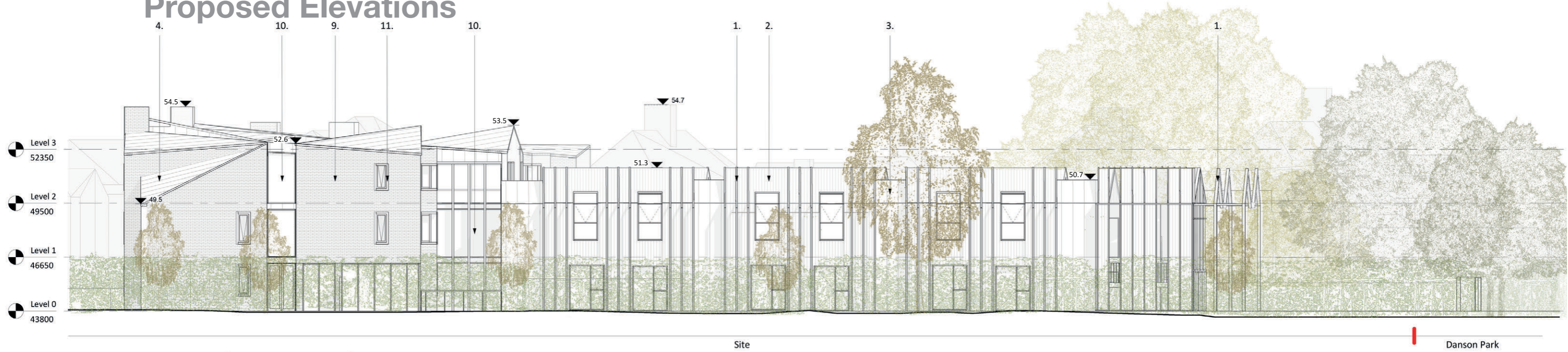


Existing east elevation  
1:200





# Design Approach Proposed Elevations



Danson Park  
Proposed north elevation  
1:200

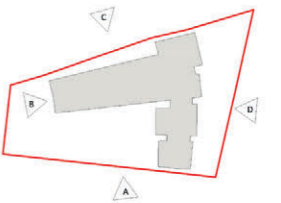


Proposed east elevation  
1:200

- 1. Metal frame for planted climbers
- 2. Vertical standing seam red/brown VMZinc fascia system
- 3. Vertical standing seam dark red/brown VMZinc fascia system
- 4. Vertical standing seam grey VMZinc fascia system

- 5. Sun tunnel
- 6. Red brick with light mortar
- 7. Red/brown brick with dark mortar
- 8. Red brick with dark mortar
- 9. Red/brown brick with light mortar
- 10. Fixed glazing
- 11. Masonry window surround

- 12. Masonry mullions
- 13. Fixed window with integral inward opening section. Aluminium external facing in selected RAL colour tbc
- 14. Full height glazing to enclose a winter garden





# Design Approach

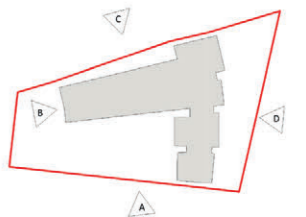
## Existing Elevations



Existing south elevation  
1:200

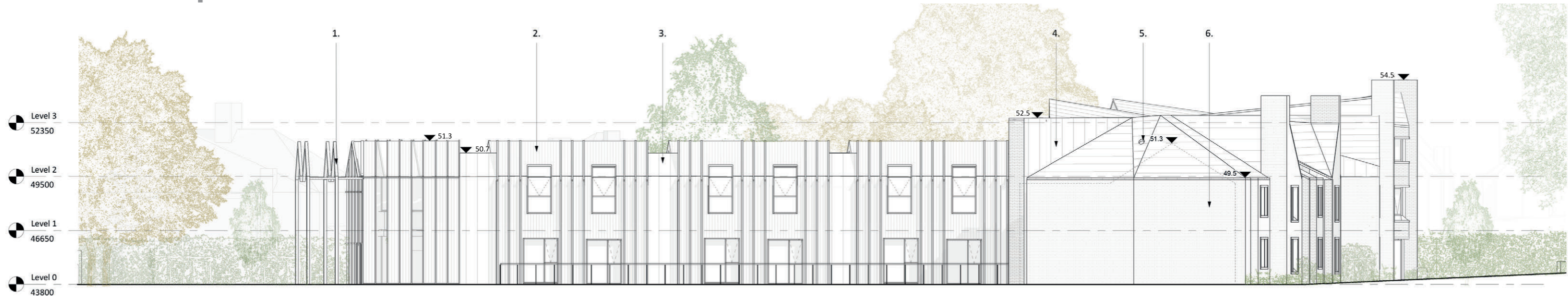


Existing west elevation  
1:200

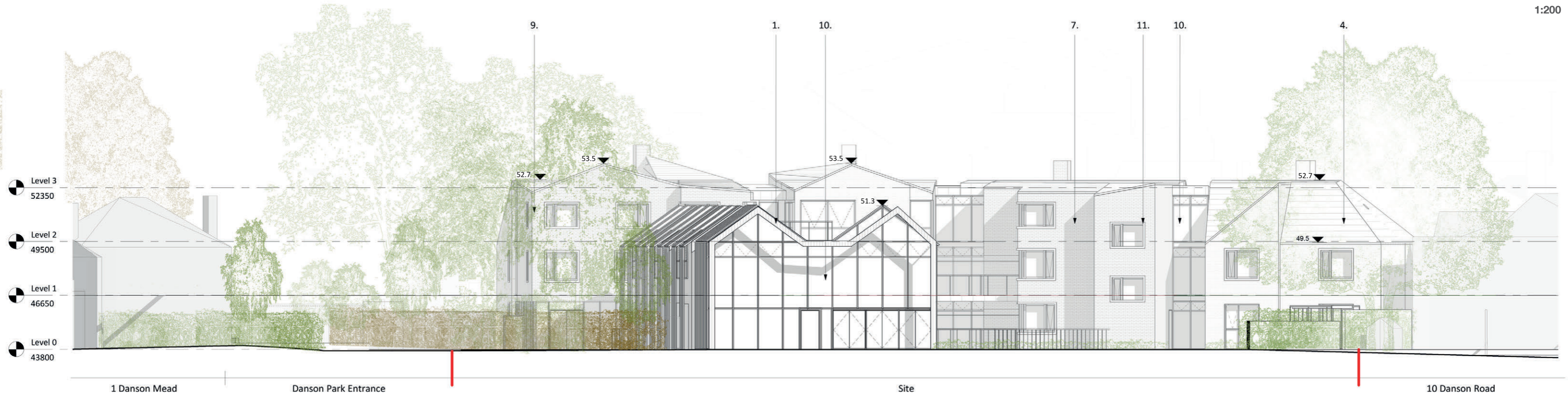




# Design Approach Proposed Elevations



Proposed south elevation  
1:200



Proposed west elevation  
1:200

- |   |   |   |
|---|---|---|
| <ul style="list-style-type: none"> <li>1. Metal Frame for planted climbers</li> <li>2. Vertical standing seam red/brown VMZinc fascia system</li> <li>3. Vertical standing seam dark red/brown VMZinc fascia system</li> <li>4. Vertical standing seam grey VMZinc fascia system</li> </ul> | <ul style="list-style-type: none"> <li>5. Sun tunnel</li> <li>6. Red brick with light mortar</li> <li>7. Red/brown brick with dark mortar</li> <li>8. Red brick with dark mortar</li> <li>9. Red/brown brick with light mortar</li> <li>10. Fixed glazing</li> <li>11. Masonry window surround</li> </ul> | <ul style="list-style-type: none"> <li>12. Masonry mullions</li> <li>13. Fixed window with integral inward opening section. Aluminium external facing in selected RAL colour tbc</li> <li>14. Full height glazing to enclose a winter garden</li> </ul> |
|---|---|---|

