

Design Approach

Landscape Design

Landscape Setting

The site is located to the north-east corner of Danson Park, Grade II Listed on the Register of Historic Parks and Gardens. Danson Park is characterised by large, open, sweeping lawns, a large lake, copses of trees and avenues of trees along pathways.

The Grade I listed Danson House, a Georgian mansion, is sited within the centre of the park, at a higher level to the site. Other elements of the park include recreation and sports areas (tennis, cricket and bowling green), an Old English Garden, and play areas which are located close to the site in the north of the park.

Tree planting within the park is mature and mainly native. The park is also home to the Charter Oak, one of London's 'Great Trees'.

-  Site boundary
-  Danson House
-  Charter Oak



Danson Park - immediate context



Copse of trees (Poplar and Willow) to the west of the site boundary



Danson Park



Perennial borders in the Old English Garden, Danson Park



Approach to Danson House (Grade I Listed Georgian Mansion)

Design Approach

Landscape Design

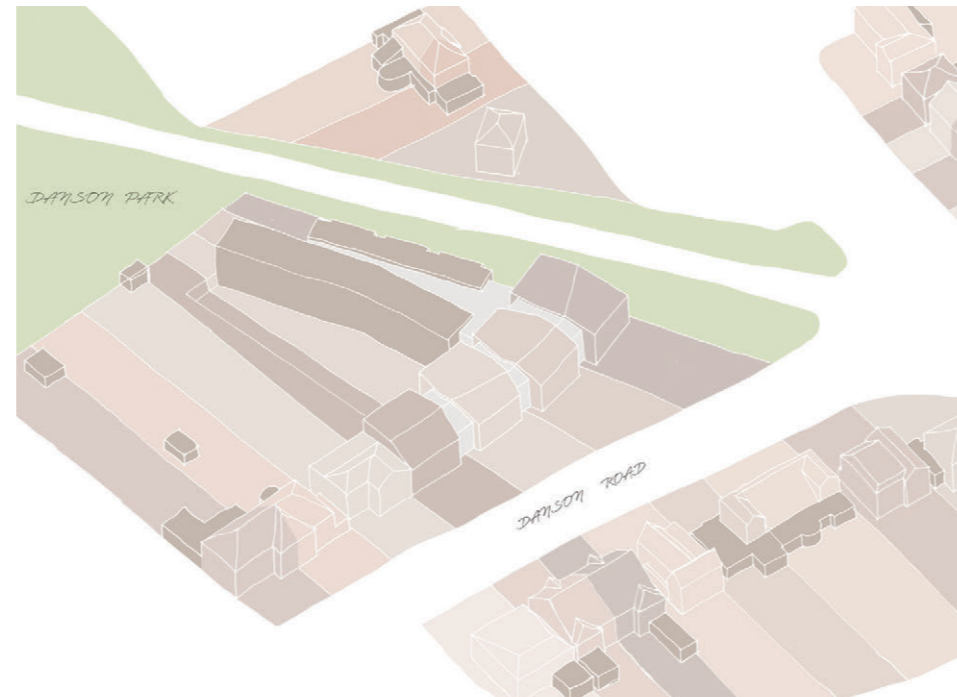
Concept Development

The project Architect's have developed a concept that looks at the site in 'Ribbons'. These ribbons form the framework for the urban grain and built form of the building proposals.

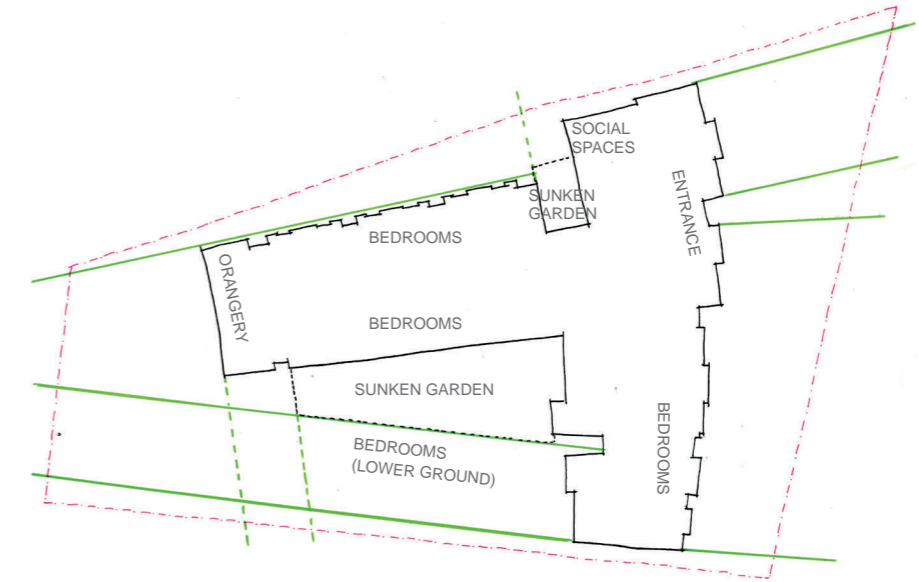
Leading lines from the proposed architectural form extend the idea of ribbons out into the landscape. Areas are defined by the leading lines from the building.

Existing trees within and around the development are retained and protected. Some trees within the building footprint are removed, and an additional four within the landscape are proposed for removal (Category C and U trees).

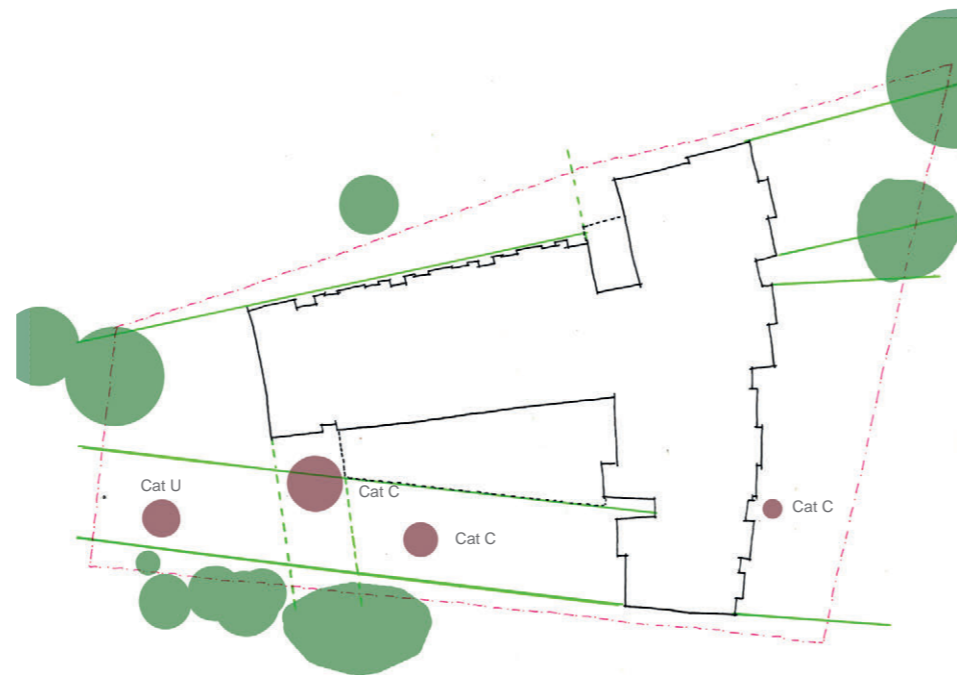
A sun and shade analysis of the landscape with the proposed building shows most of the garden areas are in sun or partial sun, with a more shaded areas along the northern boundary.



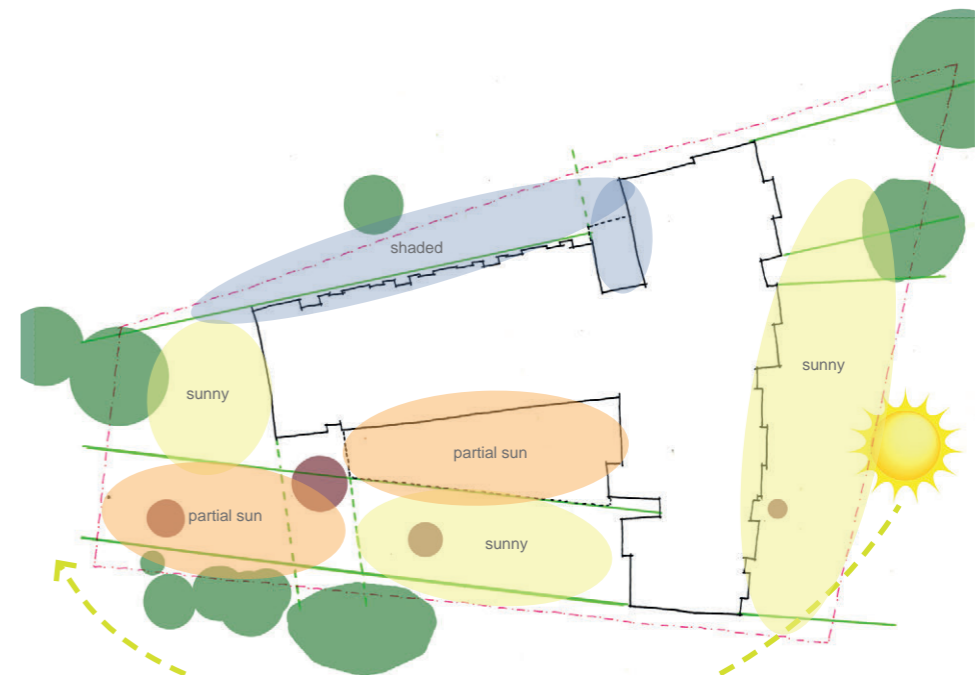
Ryder 'Ribbon' concept for urban grain and built form



Leading lines from the architecture



Existing trees to be retained and removed



Sun and shade analysis

Design Approach

Landscape Design

Spatial Layout

The spatial layout for the landscape is based upon the leading lines from the architecture and the urban grain concept of ribbons through the site. In addition to this the landscape layout has considered the internal building uses and how they flow into the gardens.

The lower ground floor of the building proposes a series of bedrooms underneath the gardens. The extent of the below ground structure is noted on the plan.

The eastern side of the site is defined by frontage planting, the entrance space and car parking. Two large trees are retained in the north-east corner for their amenity value.

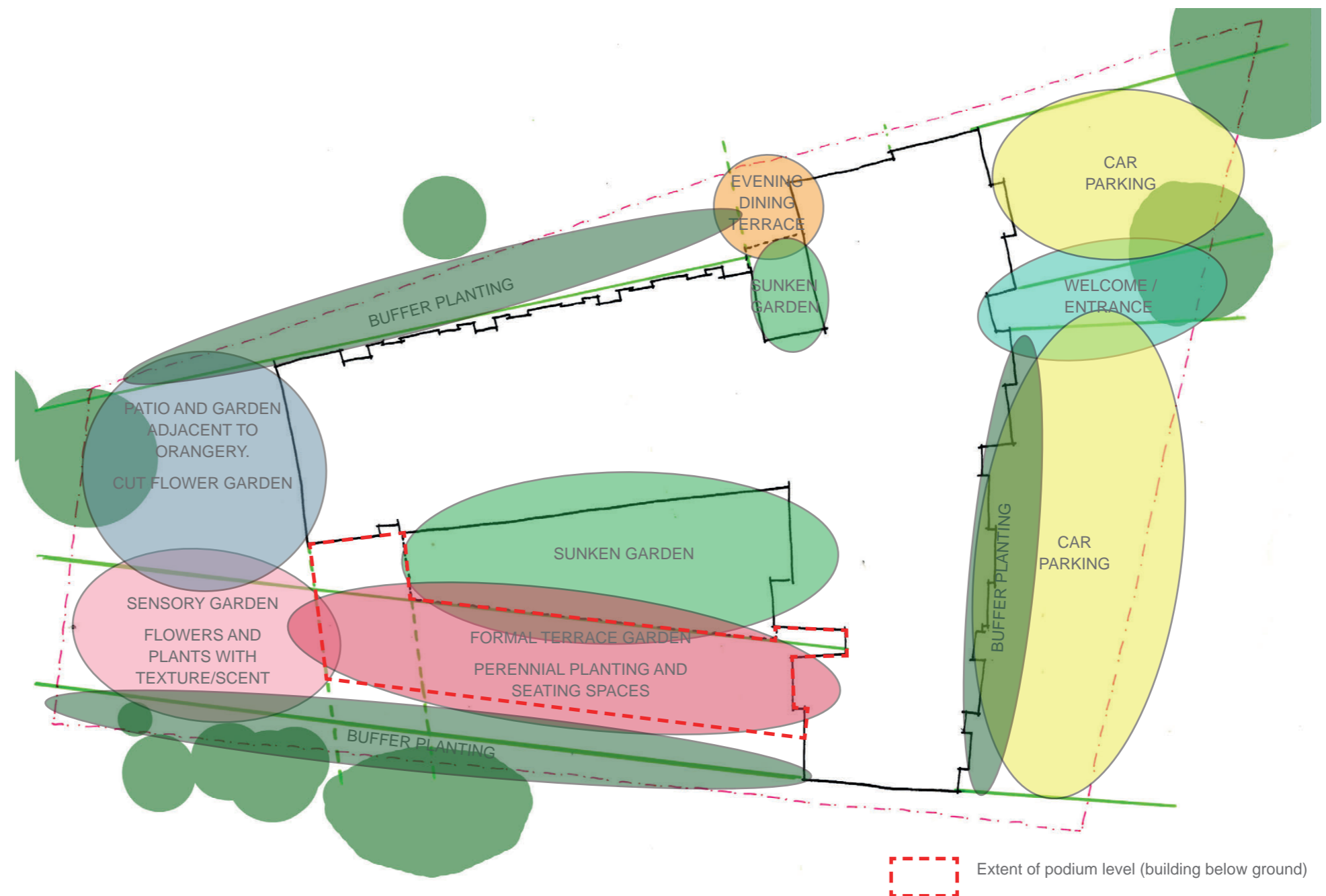
The western side of the site is divided into two key character spaces; a formal patio and planting space to the north, adjacent to the orangery, and a sensory garden to the south. The patio space spills out from the double-height orangery with areas to sit, eat and socialise. The planting in this space will be ornamental with cut flowers and the potential for growing opportunities, perhaps edible plants, for longer-term patients.

The sensory garden is in an area of dappled shade from the existing trees to the southern boundary. This space is more contemplative, with quieter seating areas, feature trees and plants with scent and texture to stimulate the senses.

The terrace is a formal space above the lower ground bedrooms with areas to sit and relax, and overlook the sunken garden below. This area is characterised by raised planters with perennial and colourful plants.

The sunken garden is the central feature space which is both overlooked from above and accessed by bedrooms on the lower ground. This space considers light and reflection, and will use feature trees and water features to enhance to space.

To the northern side of the building a small evening terrace spills out from the internal dining space, and an additional sunken garden with climbing plants provides a breakout space from the lower ground level for the staff.



Spatial layout

Design Approach Landscape Design

Moodboard

ORANGERY GARDEN



Patio - dining and plant pots



Cut flower garden



Ornamental and edible planting

SENSORY GARDEN



Planting beds/pockets

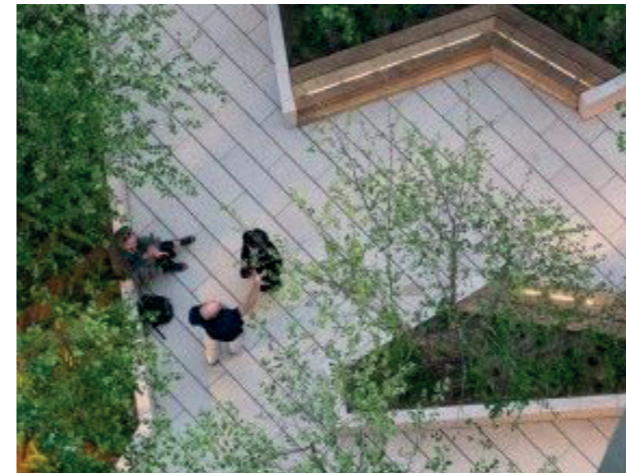


Textured plants



Plants with scents, texture, form and colour

TERRACE GARDEN



Integrated seating and planters



Perennial planting

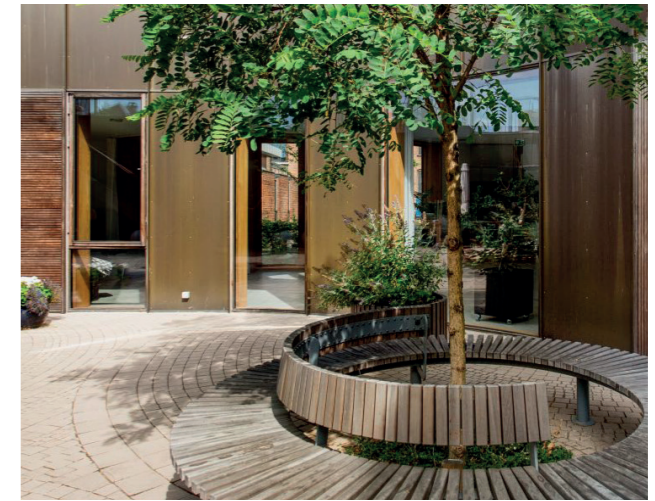


Space to relax

SUNKEN GARDEN



Water features



Seating around trees



Feature specimens - maples